

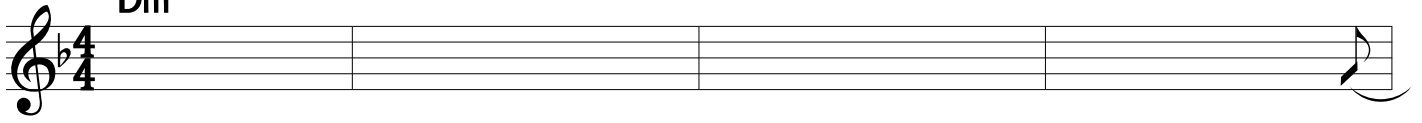
New Faith

Intro.

♩ = 190

Composed by: セキソウタ
Words by: トクドメケンスケ

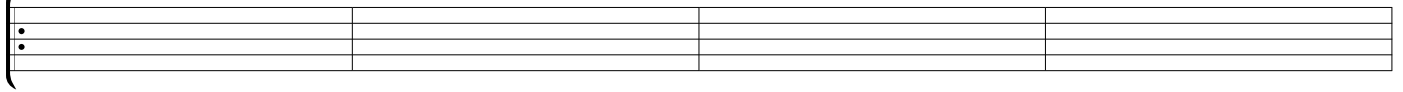
Dm



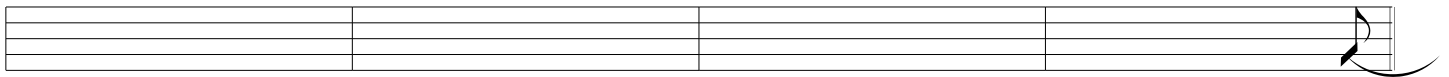
Dm



Dm



Dm

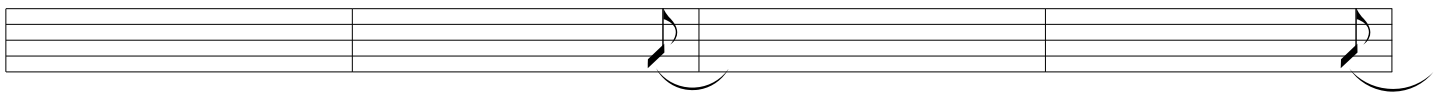


A

Dm

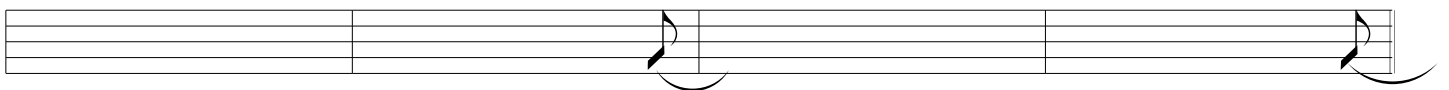
F

C



G

Dm



A'

Dm

F

C



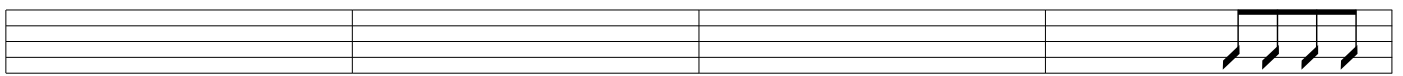
C

G



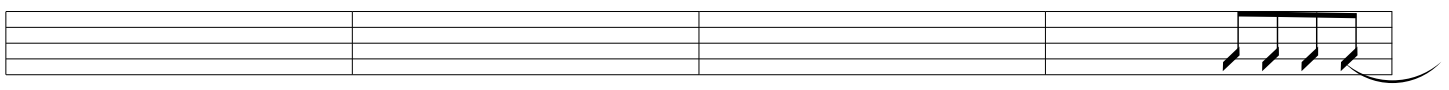
B

Dm



Dm

Bb



B^b **C** **Dm**

A musical staff with four measures. The first measure is empty. The second measure contains a quarter note G4. The third measure contains a quarter note A4, a quarter note B4, and a quarter note C5, all beamed together. The fourth measure contains a half note D5 and a half note E5, beamed together. Chord symbols B^b, C, and Dm are placed above the staff.

C **Dm** **F** **G**

A musical staff with four measures. The first measure is empty. The second measure contains a quarter note G4. The third measure contains a quarter note A4, a quarter note B4, and a quarter note C5, all beamed together. The fourth measure contains a half note D5 and a half note E5, beamed together. Chord symbols C, Dm, F, and G are placed above the staff.

G **C** **B** **Dm**

A musical staff with four measures. The first measure is empty. The second measure contains a quarter note G4. The third measure contains a quarter note A4, a quarter note B4, and a quarter note C5, all beamed together. The fourth measure contains a half note D5 and a half note E5, beamed together. Chord symbols G, C, B, and Dm are placed above the staff.

Dm **F** **G**

A musical staff with four measures. The first measure is empty. The second measure contains a quarter note G4. The third measure contains a quarter note A4, a quarter note B4, and a quarter note C5, all beamed together. The fourth measure contains a half note D5 and a half note E5, beamed together. Chord symbols Dm, F, and G are placed above the staff.

G **C** **D^b**

A musical staff with four measures. The first measure is empty. The second measure contains a quarter note G4. The third measure contains a quarter note A4, a quarter note B4, and a quarter note C5, all beamed together. The fourth measure contains a half note D5 and a half note E5, beamed together. Chord symbols G, C, and D^b are placed above the staff.

Bridge

Dm

A musical staff with four measures. The first measure is empty. The second measure contains a quarter note G4. The third measure contains a quarter note A4, a quarter note B4, and a quarter note C5, all beamed together. The fourth measure contains a half note D5 and a half note E5, beamed together. Chord symbol Dm is placed above the staff.

Dm **E^b** **F**

A musical staff with four measures. The first measure is empty. The second measure contains a quarter note G4. The third measure contains a quarter note A4, a quarter note B4, and a quarter note C5, all beamed together. The fourth measure contains a half note D5 and a half note E5, beamed together. Chord symbols Dm, E^b, and F are placed above the staff.

Solo

Dm

A musical staff with four measures. The first measure is empty. The second measure contains a quarter note G4. The third measure contains a quarter note A4, a quarter note B4, and a quarter note C5, all beamed together. The fourth measure contains a half note D5 and a half note E5, beamed together. Chord symbol Dm is placed above the staff.

Dm

A musical staff with four measures. The first measure is empty. The second measure contains a quarter note G4. The third measure contains a quarter note A4, a quarter note B4, and a quarter note C5, all beamed together. The fourth measure contains a half note D5 and a half note E5, beamed together. Chord symbol Dm is placed above the staff.

B^b **C** **Dm**

A musical staff with four measures. The first measure is empty. The second measure contains a quarter note G4. The third measure contains a quarter note A4, a quarter note B4, and a quarter note C5, all beamed together. The fourth measure contains a half note D5 and a half note E5, beamed together. Chord symbols B^b, C, and Dm are placed above the staff.

C'

Dm

F

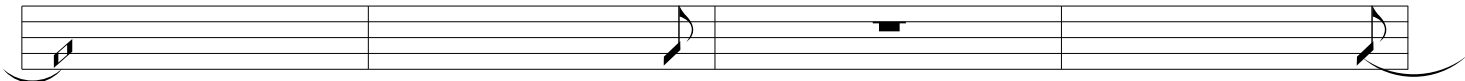
G



G

C

Dm



Dm

F

G

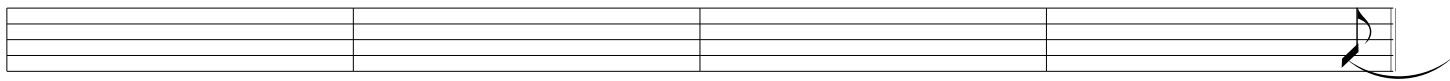


G

C

B

Dm



C''

Dm

F

G

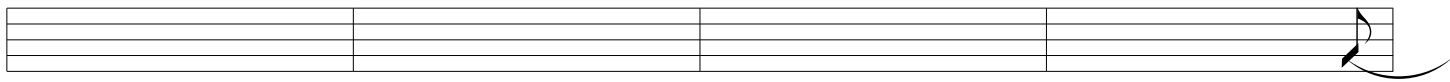


G

C

B

Dm



Dm

F

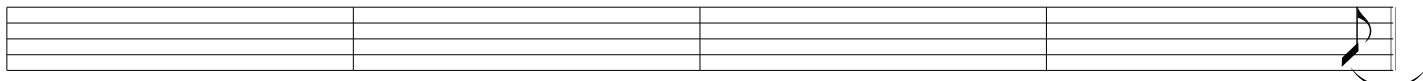
G



G

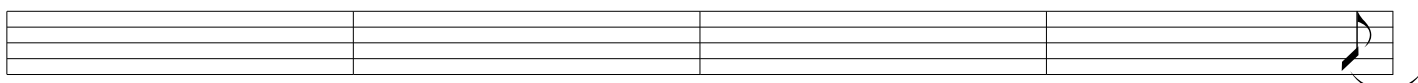
C

D^b

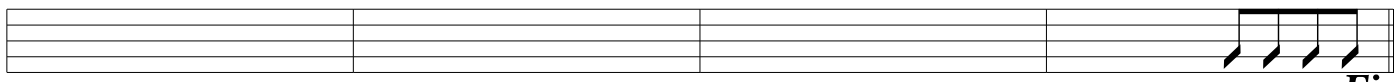


Outro.

Dm



Dm



Fine